

FIDELITY SELECT FUNDRANKER™

Volume 5 Issue 9

The Right Funds at the Right Time

September 2010

August Performance

The market fell in August for the third month out of the last four. All eight *Top Eight Model Portfolio* funds had one-month losses, which ranged from 4.1% for Leisure to 7.6% for Industrial Equipment. The *Top Eight Model Portfolio* ended August with a one-month loss of 6.819%, adding to its woes from May and June.

Nasdaq Composite tracking portfolio, S&P 500 tracking portfolio, and *Top Eight Model Portfolio* YTD returns are all negative for the year at (4.763)%, (6.418)%, and (7.256)%, respectively.

Final Performance of Funds Sold on August 5

Fundranker exchanged four funds on August 5. Here are the returns they contributed to the *Top Eight Model Portfolio*:

Fund	Bought	Sold	Return
Banking (FSRBX)	7/6/2010	8/5/2010	8.78%
Computers (FDCPX)	6/4/2010	8/5/2010	3.10%
Gold (FSAGX)	7/6/2010	8/5/2010	3.01%
Insurance (FSPCX)	7/6/2010	8/5/2010	7.37%

Bull Market Lingers in Correction Territory

The market seemed to be over problems it had with European debt in May and June, making gains in July, but in August, it fell victim to new worries of a double dip recession. At the end of trading for August, the S&P 500 Index, the Nasdaq Composite Index, and the *Top Eight Model Portfolio* had fallen 13.1%, 16.2%, and 18.8% from their April 23 bull market highs, stubbornly over the 10% decline that marks correction territory.

Perilous September, October?

Does *Fundranker* do better in some months than others? Here is a review of *Fundranker's* average monthly returns since its inception in January, 1997:

Month	Up Years	Down Years	Average Return
January	7	7	0.846
February	7	7	1.748
March	7	7	1.667
April	11	3	1.319
June	9	5	2.265
July	11	3	0.099
August	7	7	0.140
September	7	6	(0.236)
October	6	7	(0.961)
November	10	3	2.636
December	12	1	5.202

As you can see, *Fundranker* fared the worst in July through October, but don't let that scare you away from staying invested. Those months' averages are skewed by *Fundranker's* worst five months, all with losses of greater than 10%, and all of which happened to fall in July through October. In our estimation, it is very unlikely that *Fundranker* will see losses of those magnitudes again anytime soon.

Holding Period Alert

If you purchased shares after August 6 of any funds which are being exchanged on September 7, to avoid roundtrip transactions under Fidelity's frequent trading policy for Select funds, you should wait at least 30 days after purchase before exchanging them.

Investing New Money

If you are a new subscriber, or you have new money to invest using the *Fundranker* system, first put the new money into Select Money Market. To reduce exposure to roundtrip transactions, on the next *Invest New Money Date* (see box at right), exchange your new

money into the funds in the *Top Eight Model Portfolio* for that month.

New subscribers should allocate equal amounts to each of the eight funds. If you already have a portfolio of Top Eight funds, allocate new money only to funds that are not being exchanged this month to balance those funds as much as possible.

Subscribe to Fidelity Select Fundranker

You can subscribe to *Fidelity Select Fundranker* for \$49/first year, \$99/year thereafter. For these yearly fees, you will receive 12 issues of *Fidelity Select Fundranker* newsletter via email on or before the first day of each month. You also will receive an email in advance of each issue to alert you to the upcoming issue and the likelihood of the possible exchange dates, so that you can plan ahead for your exchanges. *Fidelity Select Fundranker* has a website, www.fundranker.com, with much historical information about the *Fidelity Select Fundranker* system, but subscribing to the newsletter is the only way to get timely notice of the monthly exchanges. To subscribe, click the Subscribe button at www.fundranker.com.

Questions and Suggestions

Do you have a question about investing using the *Fundranker* system or a suggestion for the newsletter or website? Check the FAQs or use the *Contact Us* form at www.fundranker.com. We welcome your input.

Top Eight Model Portfolio for September 2010

Fund Name (Symbol)	Purchase	Return to 8/31
1. Gold (FSAGX)	9/7/2010	
2. Utilities (FSUTX)	9/7/2010	
3. Telecommunications (FSTCX)	9/7/2010	
4. Transportation (FSRFX)	3/5/2010	3.44%
5. Air Transportation (FSAIX)	2/3/2010	6.55%
6. Multimedia (FBMPX)	2/3/2010	4.73%
7. Wireless (FWRLX)	9/7/2010	
8. Pharmaceuticals (FPHAX)	9/7/2010	
Funds to be sold on September 7:		
9. Leisure (FDLSX)	6/4/2010	(3.94)%
12. Automotive (FSAVX)	8/5/2010	(9.37)%
16. Industrials (FCYIX)	8/5/2010	(8.92)%
20. Defense & Aerospace (FSDAX)	8/5/2010	(9.07)%
22. Industrial Equipment (FSCGX)	8/5/2010	(9.38)%

Fundranker Exchanges for September 7

Sell Industrials (FCYIX), buy Gold (FSAGX)
 Sell Automotive (FSAVX), buy Utilities (FSUTX)
 Sell Industrial Equipment (FSCGX), buy Telecommunications (FSTCX)
 Sell Leisure (FDLSX), buy Wireless (FWRLX)
 Sell Defense & Aerospace (FSDAX), buy Pharmaceuticals (FPHAX)

Fundranker Invest New Money Date

Invest new money on September 2.

Optional Rebalancing Exchange Dates

Method 1: none; Method 2: September 2; Method 3: September 7 (see the rebalancing FAQ at www.fundranker.com for more information)

Upcoming Fundranker Exchange Date

If all funds to be exchanged have been held more than one month, *Fundranker* will exchange on October 4; otherwise *Fundranker* will exchange on October 7.

Fidelity Select Fundranker is published via email on the first day of each month and is edited by Harvey J. Poorbaugh. Subscriptions are available at \$49/first year, \$99/year thereafter. *Fidelity Select Fundranker* is not affiliated with Fidelity Investments. All facts and figures are obtained from reliable sources but are subject to revision. Past results are never an assurance of future performance. The information in this newsletter is not intended as individualized investment advice. For more information, go to www.fundranker.com. © 2010 Fidelity Select Fundranker

<i>Fundranker</i> Ratings for 8/31/10	12-Month	6-Month	3-Month	1-Month	<i>Fundranker</i>	<i>Fundranker</i>
Fund (Symbol)	Return %	Return %	Return %	Return %	Rating**	Ranking
Air Transportation (FSAIX)	32.60*	0.48*	(3.64)	(6.76)	7.670	5
Automotive (FSAVX)	16.45*	1.80*	(0.75)	(6.95)	4.638	12
Banking (FSRBX)	(2.57)	(10.96)	(16.24)	(12.58)	(10.588)	37
Biotechnology (FBIOX)	(4.14)	(8.62)	(2.76)	(3.34)	(4.715)	29
Brokerage & Investment Mgmt (FSLBX)	(8.81)	(8.82)	(9.63)	(7.63)	(8.723)	35
Chemicals (FSCHX)	12.80	0.00	3.95*	(2.02)	4.683	11
Communications Equipment (FSDCX)	13.67*	(0.43)	(3.00)	(5.52)	2.180	17
Computers (FDCPX)	11.00	(0.94)	(6.05)	(5.99)	(0.495)	23
Construction & Housing (FSHOX)	(0.46)	(5.96)	(13.47)	(3.74)	(5.908)	32
Consumer Discretionary (FSCPX)	15.23*	(0.63)	(7.05)	(4.47)	1.770	18
Consumer Staples (FDFAX)	7.75	(0.98)	2.95*	(2.13)	2.898	14
Defense & Aerospace (FSDAX)	14.84*	(1.83)	(5.72)	(7.40)	0.973	20
Electronics (FSELX)	(5.47)	(12.60)	(14.86)	(9.82)	(10.688)	38
Energy (FSENX)	1.68	(12.06)	(3.04)	(5.27)	(4.673)	28
Energy Service (FSSEX)	0.99	(12.53)	(0.14)	(7.18)	(4.715)	29
Environment & Alternative Energy (FSLEX)	5.29	0.74*	0.47*	(4.14)	2.590	15
Financial Services (FIDSX)	(10.31)	(13.00)	(12.93)	(11.05)	(11.823)	39
Gold (FSAGX)	35.84*	21.87*	8.89*	10.58*	23.295	1
Health Care (FSPHX)	3.87	(7.93)	(5.85)	(3.10)	(3.253)	27
Home Finance (FSVLX)	(3.85)	(11.99)	(13.75)	(11.50)	(10.273)	36
Industrial Equipment (FSCGX)	13.39	(2.04)	(5.71)	(7.61)	(0.493)	22
Industrials (FCYIX)	14.06*	0.10*	(4.67)	(7.21)	2.570	16
Insurance (FSPCX)	3.90	(1.84)	(1.21)	(4.32)	(0.868)	24
IT Services (FBSOX)	12.49	(1.93)	(2.45)	(4.34)	0.943	21
Leisure (FDLSX)	18.57*	4.65*	(5.43)	(4.06)	5.433	9
Materials (FSDPX)	12.15	(0.52)	0.71*	(2.73)	3.403	13
Medical Delivery (FSHCX)	4.13	(11.83)	(10.56)	(3.46)	(5.430)	31
Medical Equipment & Systems (FSMEX)	(2.66)	(13.00)	(9.18)	(5.55)	(7.598)	34
Multimedia (FBMPX)	23.11*	2.02*	(3.28)	(5.14)	6.178	6
Natural Gas (FSNGX)	(4.52)	(14.79)	(3.65)	(4.27)	(6.808)	33
Natural Resources (FNARX)	5.64	(7.81)	(2.45)	(4.39)	(2.253)	26
Pharmaceuticals (FPHAX)	12.10	(0.95)	2.97*	0.56*	5.670	8
Retailing (FSRPX)	11.11	(5.86)	(11.23)	(2.64)	(2.155)	25
Software & Computer Services (FSCSX)	12.67	(2.06)	(0.99)	(2.71)	1.728	19
Technology (FSPTX)	16.84*	1.33*	(1.61)	(3.38)	5.295	10
Telecommunications (FSTCX)	15.03*	6.54*	3.20*	(1.62)	8.788	3
Transportation (FSRFX)	29.60*	7.48*	(4.65)	(7.34)	8.273	4
Utilities (FSUTX)	10.28	9.48*	8.05*	1.66*	10.368	2
Wireless (FWRLX)	11.89	4.02*	2.12*	(2.32)	5.928	7

*Bonus point for being in the top 12 positive returns for a specific period

**Bonus points plus average of 12-, 6-, 3-, and 1-month returns

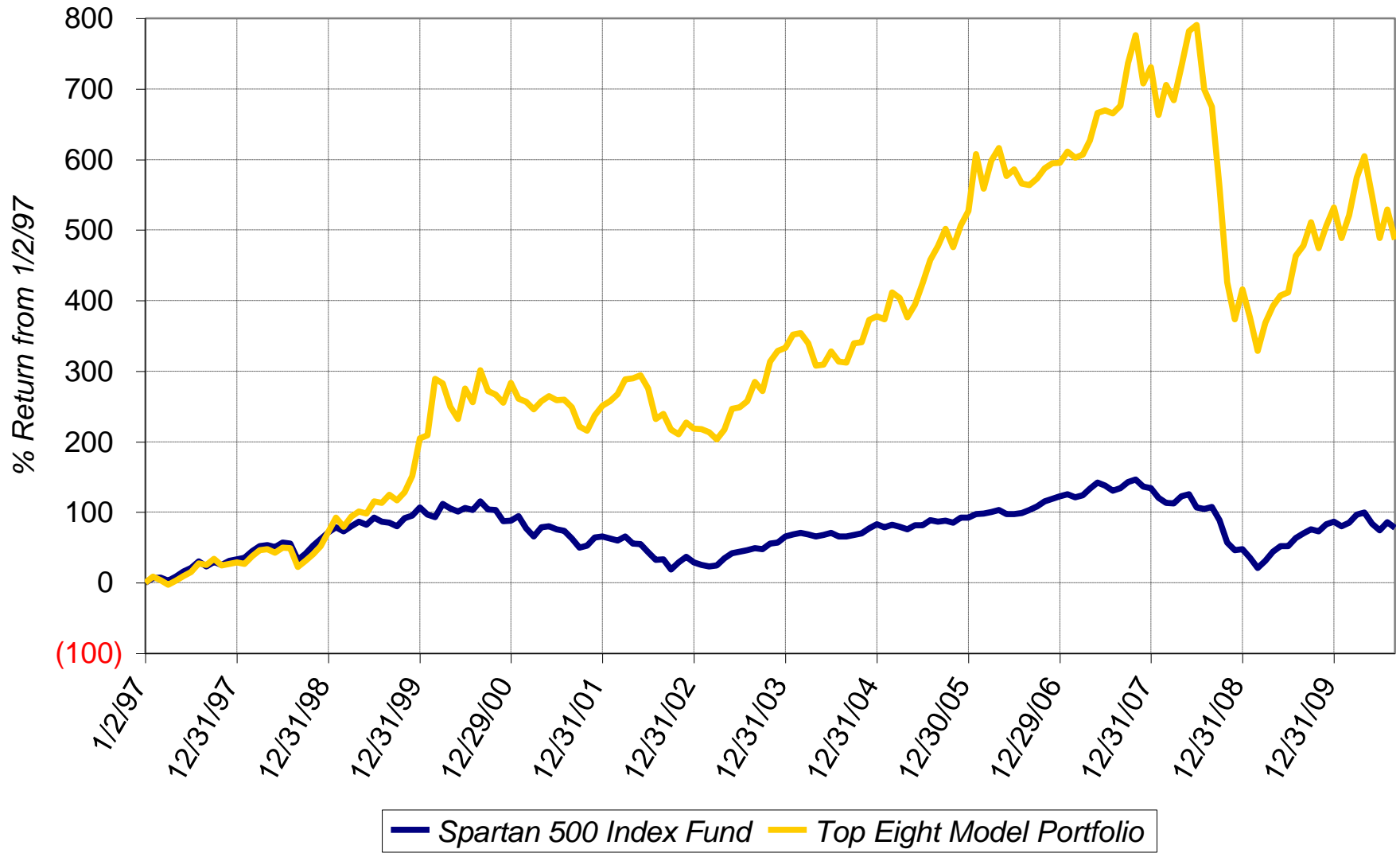
Sell on September 7, 2010

Buy on September 7, 2010

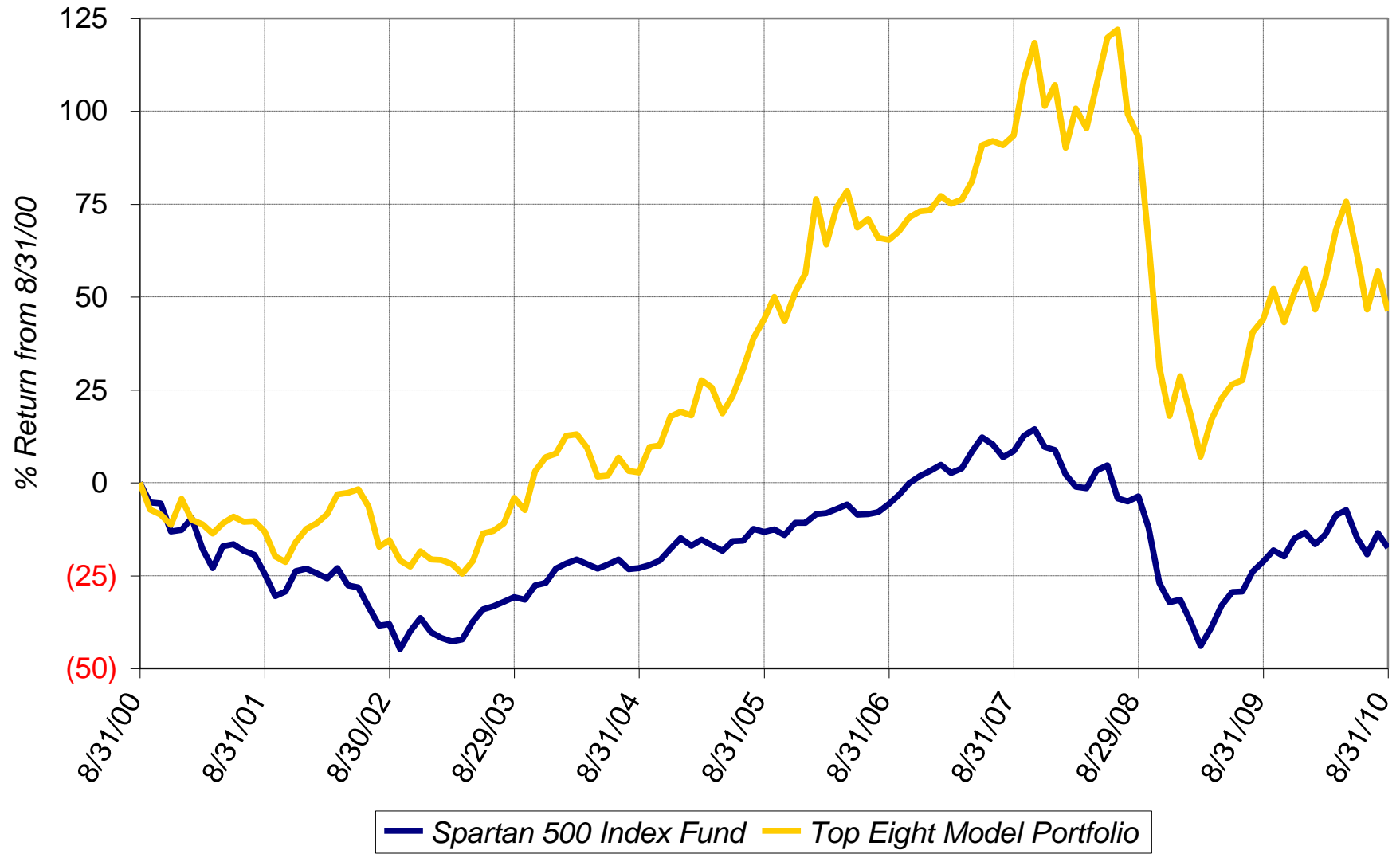
Hold

Fundranker Performance for August 2010												
7/30 Funds	7/30 Shares	7/30 Amount	<=8/5 Div Shrs	8/5 Shares	8/5 Amount	8/5 Funds	8/5 Shares	8/5 Amount	>8/5 Div Shrs	8/31 Shares	8/31 Amount	Aug Return
FSAGX	388.088	17,320.37	none	388.088	17,921.90	FSRFX	391.695	19,138.24	none	391.695	17,665.44	
FSRFX	406.495	19,784.11	none	406.495	19,861.35	FSAIX	496.710	19,138.24	none	496.710	17,618.30	
FSAIX	519.653	19,767.60	none	519.653	20,022.23	FBMPX	504.567	19,138.24	none	504.567	17,700.21	
FSPCX	433.433	18,472.91	none	433.433	18,680.96	FCYIX	947.907	19,138.24	none	947.907	17,432.01	
FBMPX	515.038	19,046.11	none	515.038	19,535.39	FSAVX	548.531	19,138.24	none	548.531	17,344.55	
FDCPX	405.264	18,613.78	none	405.264	18,860.99	FSCGX	677.460	19,138.24	none	677.460	17,342.98	
FSRBX	1,114.541	18,869.18	none	1,114.541	18,924.91	FDLSX	248.937	19,138.24	none	248.937	18,199.78	
FDLSX	251.017	19,127.50	none	251.017	19,298.19	FSDAX	286.072	19,138.24	none	286.072	17,401.76	
Top Eight		151,001.56			153,105.92			153,105.90			140,705.03	(6.819)
FNCMX	1,543.031	46,290.93	none						none	1,543.031	43,420.89	(6.200)
FUSEX	1,145.128	44,694.35	none						none	1,145.128	42,678.92	(4.509)
Yearly Summaries				1997	1998	1999	2000	2001				
				Return %	Return %	Return %	Return %	Return %				
<i>Top Eight Model Portfolio</i>				29.144	33.441	76.892	25.824	(8.468)				
Nasdaq Composite Index Fund				N/A	N/A	N/A	N/A	N/A				
Spartan 500 Index Fund - Investor Class				33.628	28.498	20.633	(9.132)	(12.054)				
Yearly Summaries				2002	2003	2004	2005	2006				
				Return %	Return %	Return %	Return %	Return %				
<i>Top Eight Model Portfolio</i>				(9.333)	35.952	10.340	31.341	10.863				
Nasdaq Composite Index Fund				N/A	N/A	8.598	1.902	10.031				
Spartan 500 Index Fund - Investor Class				(22.173)	28.487	10.733	4.858	15.712				
Yearly Summaries				2007	2008	2009	2010 YTD					
				Return %	Return %	Return %	Return %					
<i>Top Eight Model Portfolio</i>				19.463	(37.882)	22.518	(7.256)					
Nasdaq Composite Index Fund				10.497	(40.041)	44.959	(6.418)					
Spartan 500 Index Fund - Investor Class				5.426	(37.047)	26.502	(4.763)					
Lifetime Summary				1/2/97 to 8/31/10		1/2/97 to 8/31/10						
				Total Return %		Average Annual Return %						
<i>Top Eight Model Portfolio</i>				486.271		13.816						
Nasdaq Composite Index Fund				N/A		N/A						
Spartan 500 Index Fund - Investor Class				77.829		4.302						
10-Year Summary				8/31/00 to 8/31/10		8/31/00 to 8/31/10						
				Total Return %		Average Annual Return %						
<i>Top Eight Model Portfolio</i>				46.148		3.867						
Nasdaq Composite Index Fund				N/A		N/A						
Spartan 500 Index Fund - Investor Class				(17.486)		(1.904)						
5-Year Summary				8/31/05 to 8/31/10		8/31/05 to 8/31/10						
				Total Return %		Average Annual Return %						
<i>Top Eight Model Portfolio</i>				1.528		0.304						
Nasdaq Composite Index Fund				1.593		0.317						
Spartan 500 Index Fund - Investor Class				(4.811)		(0.981)						
3-Year Summary				8/31/07 to 8/31/10		8/31/07 to 8/31/10						
				Total Return %		Average Annual Return %						
<i>Top Eight Model Portfolio</i>				(24.481)		(8.935)						
Nasdaq Composite Index Fund				(16.851)		(5.966)						
Spartan 500 Index Fund - Investor Class				(23.967)		(8.729)						
1-Year Summary				8/31/09 to 8/31/10		8/31/09 to 8/31/10						
				Total Return %		Average Annual Return %						
<i>Top Eight Model Portfolio</i>				1.447		1.447						
Nasdaq Composite Index Fund				6.012		6.012						
Spartan 500 Index Fund - Investor Class				4.739		4.739						

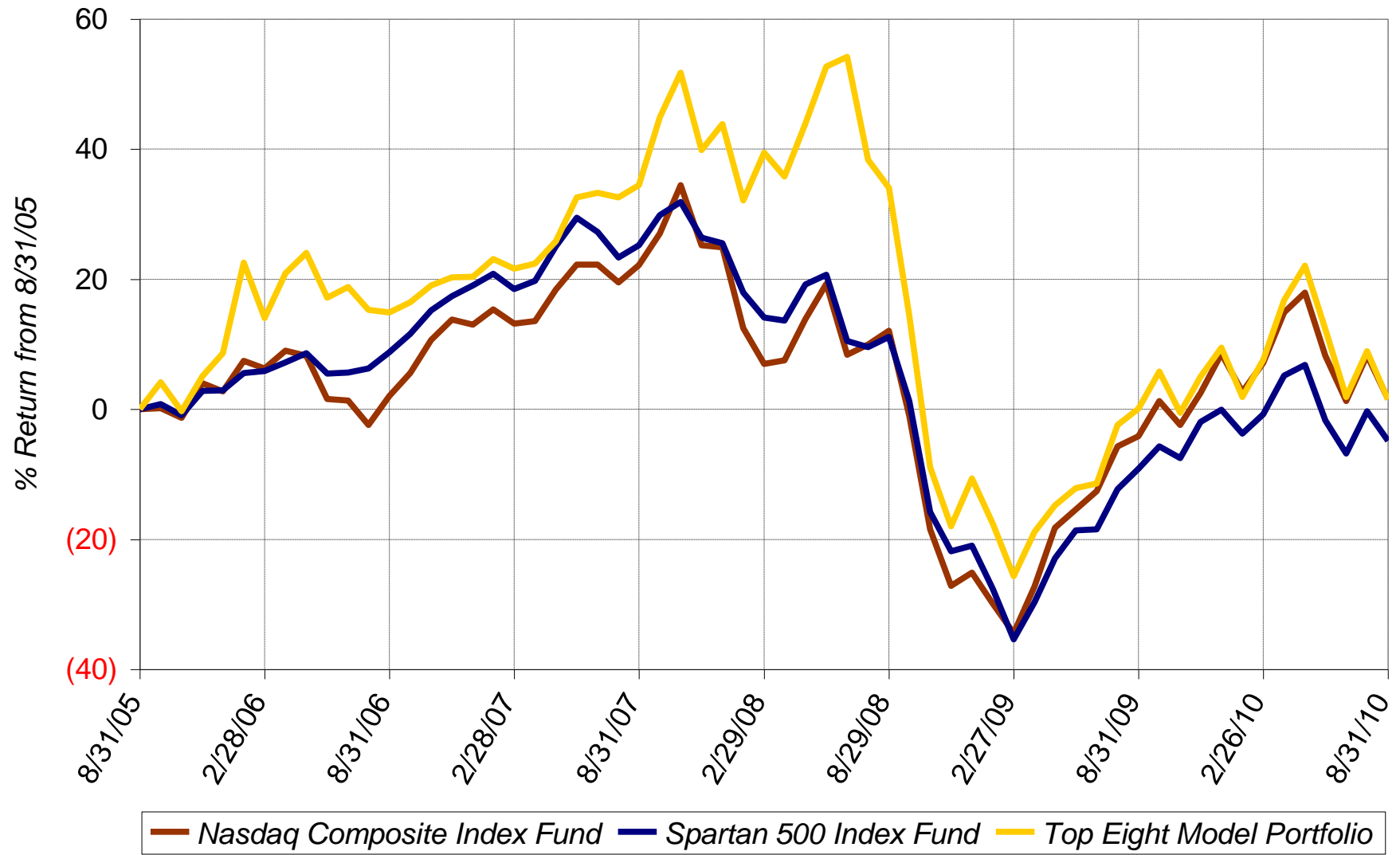
Lifetime Chart



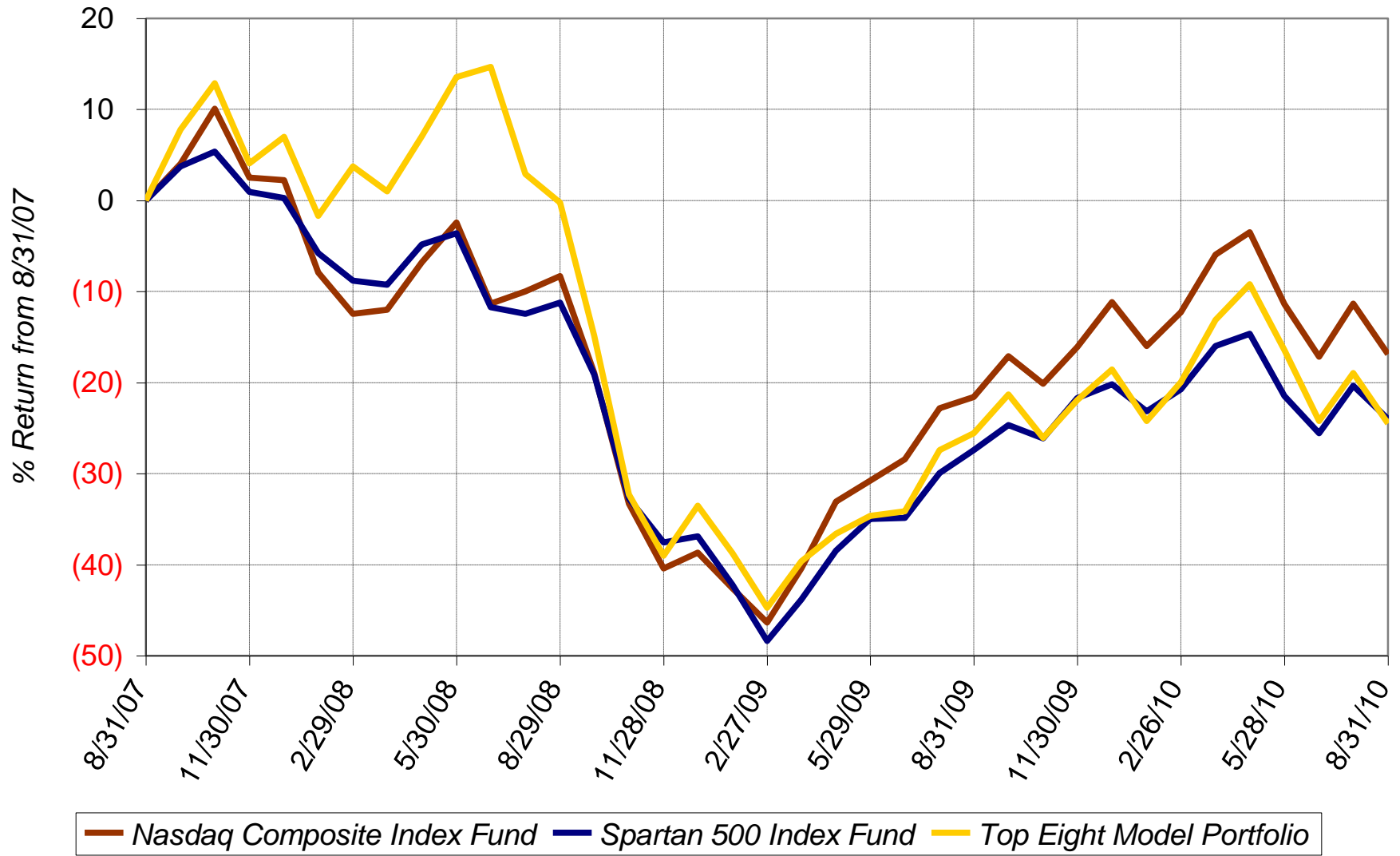
10-Year Chart



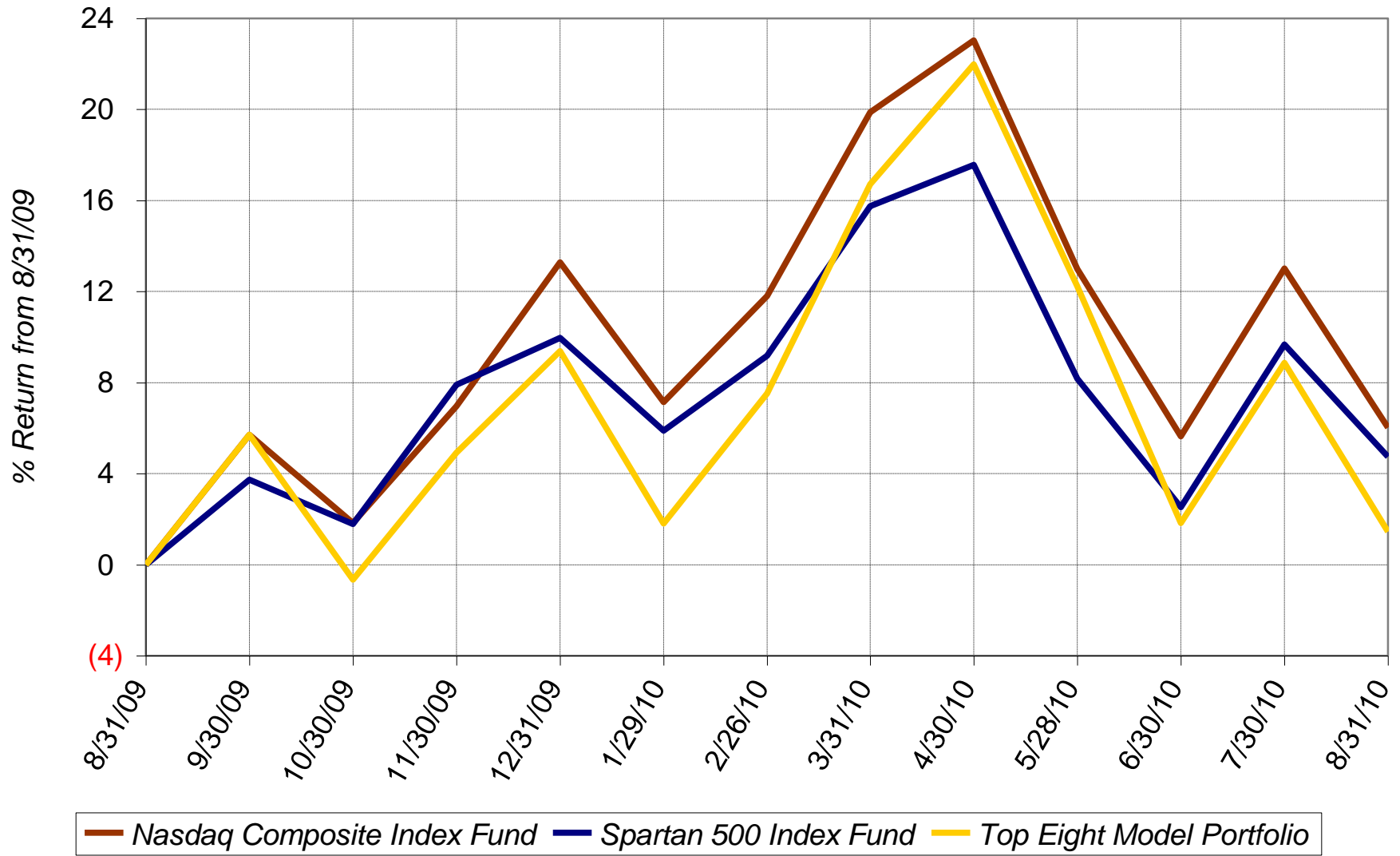
5-Year Chart



3-Year Chart



1-Year Chart



Daily Chart August 2010

