

FIDELITY SELECT FUNDRANKER™

Volume 5 Issue 7

The Right Funds at the Right Time

July 2010

June Performance

The market seemed to be on the mend in mid-June, but it broke through February lows by month end. One-month losses for funds in the *Top Eight Model Portfolio* ranged from 5.5% for Computers to 12.4% for Retailing, giving the *Top Eight Model Portfolio* a one-month loss of 9.280%, which unfortunately hit number eight in the *Top Eight Model Portfolio's Ten Worst Months* list at right.

Nasdaq Composite tracking portfolio, S&P 500 tracking portfolio, and *Top Eight Model Portfolio* YTD returns fell to (6.751)%, (6.787)%, and (6.918)%, respectively.

Final Performance of Funds Sold on June 4

Fundranker exchanged four funds on June 4. Here are the returns they contributed to the *Top Eight Model Portfolio*:

Fund	Bought	Sold	Return
Banking (FSRBX)	4/5/2010	6/4/2010	(9.89)%
Construction & Housing (FSHOX)	5/5/2010	6/4/2010	(20.68)%
Industrials (FCYIX)	4/5/2010	6/4/2010	(12.39)%
Industrial Equipment (FSCGX)	4/5/2010	6/4/2010	(13.81)%

Bull vs. Bear

Through June 30, the S&P 500 Index, the Nasdaq Composite Index, and *Fundranker's Top Eight Model Portfolio* fell 15.0%, 16.5%, and 18.5%, respectively, from bull market highs they reached on April 23. That put them way into correction territory, generally defined as a 10% decline from bull market highs, and much closer to bear market territory, generally defined as a 20% decline from bull market highs, than any of us would like.

So what does our current situation mean for our economy and markets? Will the bull market that started in March, 2009, with the beginning of recovery from the Great Recession be able to overcome this correction, or will it turn into a bear market? Does plummeting investor confidence portend a continued market decline, or is it a contrary indicator giving the bull market further room to run?

We're convinced here at *Fidelity Select Fundranker* that our system of regularly moving into better performing Fidelity Select funds will stand us in good stead however the market reacts to future events. It's unlikely that we'll see markets react again like they did when world financial systems nearly collapsed in 2007 and 2008; there almost always will be at least a few sectors that perform well, and *Fundranker* will find them.

Holding Period Alert

If you purchased shares after June 4 of any funds which are being exchanged on July 6, to avoid roundtrip transactions under Fidelity's frequent trading policy for Select funds, you should wait at least 30 days before exchanging the funds.

Investing New Money

If you are a new subscriber, or you have new money to invest using the *Fundranker* system, first put the new money into Select Money Market. To reduce exposure to roundtrip transactions, on the next *Invest New Money Date* (see box at right), exchange your new money into the funds in the *Top Eight Model Portfolio* for that month.

New subscribers should allocate equal amounts to each of the eight funds. If you already have a portfolio of Top Eight funds, allocate new money only to funds that are not being exchanged this month to balance those funds as much as possible.

Subscribe to Fidelity Select Fundranker

You can subscribe to *Fidelity Select Fundranker* for \$49/first year, \$99/year thereafter. For these yearly fees, you will receive 12 issues of

the *Fidelity Select Fundranker* newsletter via email on or before the first day of each month. You also will receive an email in advance of each issue to alert you to the upcoming issue and the likelihood of the possible exchange dates, so that you can plan ahead for your exchanges. *Fidelity Select Fundranker* has a website, www.fundranker.com, with much historical information about the *Fidelity Select Fundranker* system, but subscribing to the newsletter is the only way to get timely notice of the monthly exchanges. To subscribe, click the Subscribe button at www.fundranker.com.

Questions and Suggestions

Do you have a question about investing using the *Fundranker* system or a suggestion for the newsletter or website? Check the FAQs or use the *Contact Us* form at www.fundranker.com. We welcome your input.

Top Eight Model Portfolio Best and Worst Months

1. 2/2000	25.635%	1. 10/2008	(20.429)%
2. 12/1999	21.159%	2. 8/1998	(17.961)%
3. 12/1998	13.445%	3. 9/2008	(14.663)%
4. 6/2000	13.011%	4. 7/2002	(11.551)%
5. 1/2006	12.835%	5. 7/2008	(10.255)%
6. 8/2000	12.601%	6. 11/2008	(9.982)%
7. 1/1999	11.490%	7. 2/2009	(9.776)%
8. 10/2003	11.191%	8. 6/2010	(9.280)%
9. 7/1997	10.606%	9. 4/2000	(8.140)%
10. 11/1999	10.174%	10. 5/2010	(7.987)%

Top Eight Model Portfolio for July 2010

Fund Name (Symbol)	Purchase	Return to 6/30
1. Gold (FSAGX)	7/6/2010	
2. Transportation (FSRFX)	3/5/2010	1.58%
3. Air Transportation (FSAIX)	2/3/2010	2.52%
4. Insurance (FSPCX)	7/6/2010	
5. Multimedia (FBMPX)	2/3/2010	0.82%
6. Computers (FDCPX)	6/4/2010	(3.74)%
7. Banking (FSRBX)	7/6/2010	
8. Leisure (FDLSX)	6/4/2010	(7.67)%
Funds to be sold on July 6:		
11. Automotive (FSAVX)	5/4/2009	46.54%
16. Consumer Discretionary (FSCPX)	6/4/2010	(7.31)%
18. Retailing (FSRPX)	6/4/2010	(9.07)%

Fundranker Exchanges for July 6

Sell Retailing (FSRPX), buy Gold (FSAGX)
 Sell Automotive (FSAVX), buy Insurance (FSPCX)
 Sell Consumer Discretionary (FSCPX), buy Banking (FSRBX)

Fundranker Invest New Money Date

Invest new money on July 2.

Optional Rebalancing Exchange Dates

Method 1: none; Method 2: July 2; Method 3: July 6 (see the rebalancing FAQ at www.fundranker.com for more information)

Upcoming Fundranker Exchange Date

If all funds to be exchanged have been held more than one month, *Fundranker* will exchange on August 2; otherwise *Fundranker* will exchange on August 5.

Fidelity Select Fundranker is published via email on the first day of each month and is edited by Harvey J. Poorbaugh. Subscriptions are available at \$49/first year, \$99/year thereafter. *Fidelity Select Fundranker* is not affiliated with Fidelity Investments. All facts and figures are obtained from reliable sources but are subject to revision. Past results are never an assurance of future performance. The information in this newsletter is not intended as individualized investment advice. For more information, go to www.fundranker.com. © 2010 *Fidelity Select Fundranker*

<i>Fundranker Ratings for 6/30/10</i>	12-Month	6-Month	3-Month	1-Month	<i>Fundranker</i>	<i>Fundranker</i>
Fund (Symbol)	Return %	Return %	Return %	Return %	Rating**	Ranking
Air Transportation (FSAIX)	58.23*	7.16*	(11.81)	(7.28)	13.575	3
Automotive (FSAVX)	34.31*	(5.41)	(12.09)	(8.22)	3.148	11
Banking (FSRBX)	27.32*	4.84*	(12.20)	(9.56)	4.600	7
Biotechnology (FBIOX)	0.20	(7.54)	(16.64)	(5.00)	(7.245)	36
Brokerage & Investment Mgmt (FSLBX)	6.66	(9.95)	(18.00)	(10.47)	(7.940)	38
Chemicals (FSCHX)	18.32	(11.59)	(16.82)	(8.30)	(4.598)	33
Communications Equipment (FSDCX)	17.67	(4.19)	(11.24)	(6.79)	(1.138)	23
Computers (FDCPX)	31.39*	(4.69)	(6.38)	(5.46)	4.715	6
Construction & Housing (FSHOX)	17.35	(4.82)	(13.15)	(14.79)	(3.853)	31
Consumer Discretionary (FSCPX)	25.56	(0.70)	(10.68)	(9.90)	1.070	16
Consumer Staples (FDFAX)	11.49	(5.34)	(9.86)	(2.46)	(1.543)	25
Defense & Aerospace (FSDAX)	24.83	0.44*	(11.18)	(6.06)	3.008	12
Electronics (FSELX)	23.87	(10.18)	(13.07)	(8.44)	(1.955)	27
Energy (FSENX)	7.71	(15.33)	(15.66)	(5.37)	(7.163)	35
Energy Service (FSSEX)	5.61	(15.50)	(16.13)	(3.74)	(7.440)	37
Environmental (FSLEX)	8.73	(6.43)	(5.70)	(2.87)	(1.568)	26
Financial Services (FIDSX)	9.96	(6.77)	(16.80)	(8.72)	(5.583)	34
Gold (FSAGX)	35.04*	11.15*	14.30*	4.13*	20.155	1
Health Care (FSPHX)	15.95	(3.56)	(10.47)	(3.62)	(0.425)	20
Home Finance (FSVLX)	19.76	(1.88)	(13.88)	(8.83)	(1.208)	24
Industrial Equipment (FSCGX)	31.08*	(1.27)	(11.93)	(7.55)	3.583	10
Industrials (FCYIX)	31.02*	(0.79)	(10.38)	(6.84)	4.253	9
Insurance (FSPCX)	29.29*	2.36*	(10.03)	(1.91)	6.928	4
IT Services (FBSOX)	26.10	(8.13)	(9.95)	(4.60)	0.855	17
Leisure (FDLSX)	24.41	5.86*	(7.88)	(9.11)	4.320	8
Materials (FSDPX)	22.08	(11.53)	(15.68)	(8.11)	(3.310)	30
Medical Delivery (FSHCX)	25.70	(3.62)	(11.56)	(5.17)	1.338	15
Medical Equipment & Systems (FSMEX)	12.54	(3.56)	(10.91)	(2.36)	(1.073)	21
Multimedia (FBMPX)	34.73*	(1.04)	(9.33)	(6.89)	5.368	5
Natural Gas (FSNGX)	0.68	(18.54)	(17.97)	(7.34)	(10.793)	39
Natural Resources (FNARX)	12.01	(12.38)	(12.59)	(4.63)	(4.398)	32
Pharmaceuticals (FPHAX)	18.78	(3.00)	(8.46)	0.38*	2.925	13
Retailing (FSRPX)	26.45*	(2.37)	(13.77)	(12.43)	0.470	18
Software & Computer Services (FSCSX)	17.27	(10.72)	(11.69)	(5.23)	(2.593)	28
Technology (FSPTX)	26.25*	(6.64)	(9.43)	(5.30)	2.220	14
Telecommunications (FSTCX)	10.18	(5.82)	(5.65)	(3.20)	(1.123)	22
Transportation (FSRFX)	52.09*	12.61*	(6.72)	(6.36)	14.905	2
Utilities (FSUTX)	9.27	(5.55)	(3.65)	(1.34)	(0.318)	19
Wireless (FWRLX)	5.74	(5.92)	(7.56)	(3.49)	(2.808)	29

*Bonus point for being in the top 12 positive returns for a specific period

**Bonus points plus average of 12-, 6-, 3-, and 1-month returns

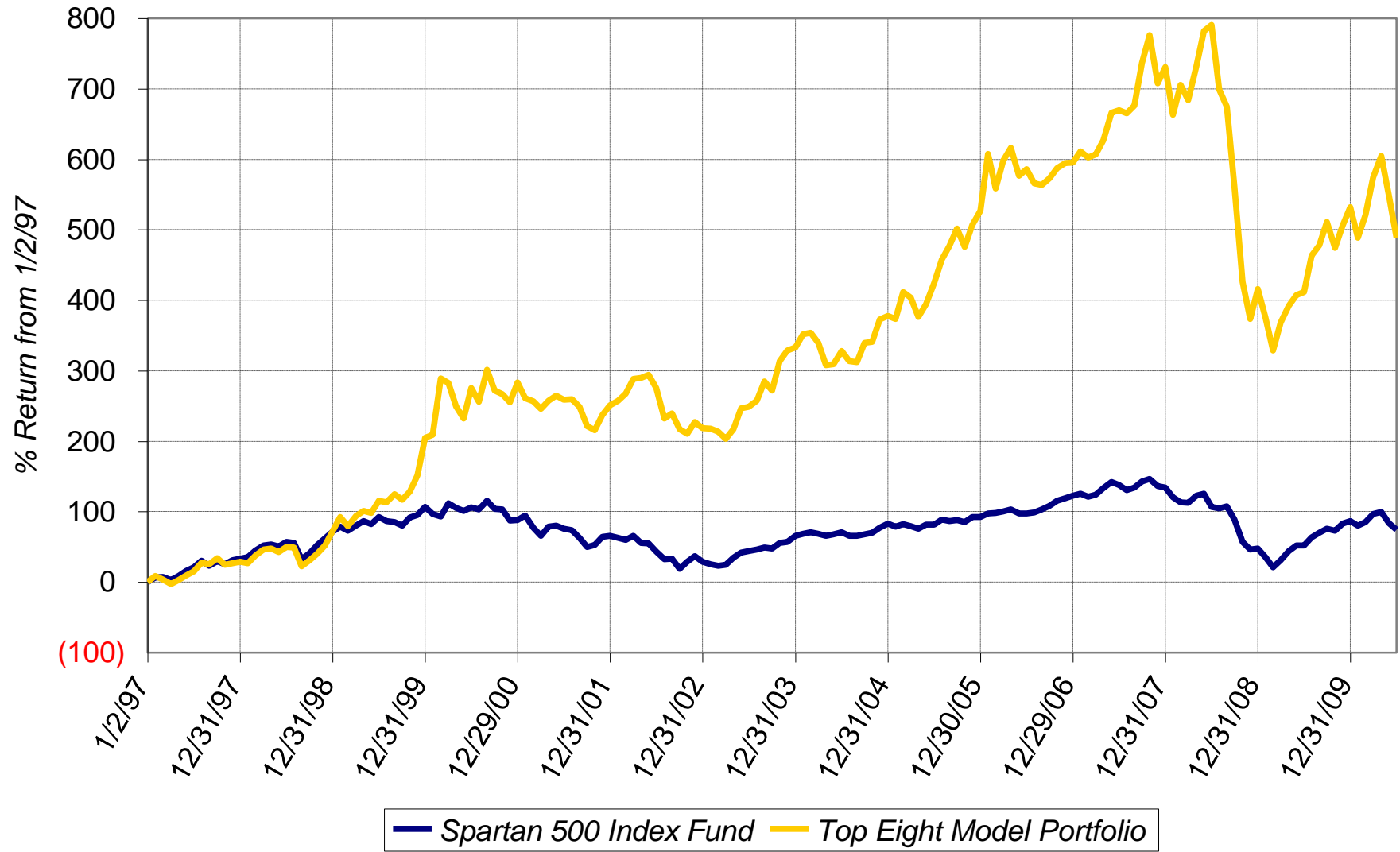
Sell on July 6, 2010

Buy on July 6, 2010

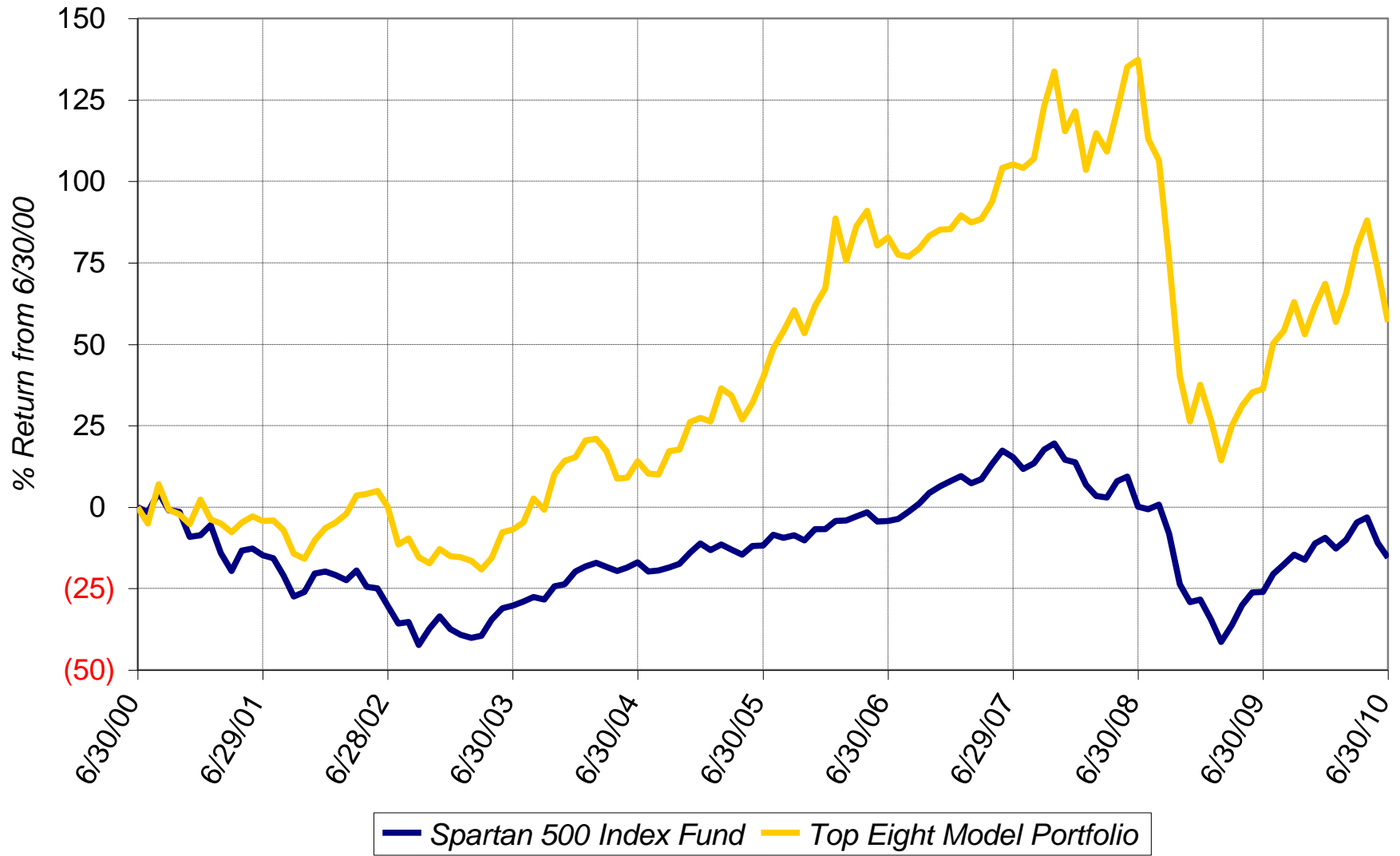
Hold

Fundranker Performance for June 2010													
5/28 Funds	5/28 Shares	5/28 Amount	<=6/4 Div Shrs	6/4 Shares	6/4 Amount	6/4 Funds	6/4 Shares	6/4 Amount	>6/4 Div Shrs	6/30 Shares	6/30 Amount	Jun Return	
FSRFX	419.334	19,834.50	none	419.334	19,276.78	FSRFX	408.094	18,760.08	none	408.094	18,074.48		
FSAIX	542.141	19,956.21	none	542.141	19,370.70	FSAIX	525.051	18,760.08	none	525.051	17,919.99		
FSAVX	613.565	19,548.18	none	613.565	19,180.04	FSRPX	418.285	18,760.08	none	418.285	17,057.66		
FSRBX	1,066.586	18,846.57	none	1,066.586	17,875.98	FBMPX	528.602	18,760.08	none	528.602	17,850.89		
FSCGX	708.366	19,232.14	none	708.366	18,502.52	FSAVX	600.131	18,760.08	none	600.131	17,547.83		
FBMPX	544.580	19,751.92	none	544.580	19,327.14	FDLSX	246.486	18,760.08	none	246.486	17,320.57		
FCYIX	1,002.196	19,332.36	none	1,002.196	18,560.67	FSCPX	932.410	18,760.08	none	932.410	17,389.45		
FSHOX	590.508	19,161.98	none	590.508	17,986.87	FDCPX	415.598	18,760.08	none	415.598	18,057.73		
Top Eight		155,663.86			150,080.70			150,080.60			141,218.60	(9.280)	
FNCMX	1,543.031	46,275.50	none						none	1,543.031	43,266.59	(6.502)	
FUSEX	1,139.753	44,074.25	none						none	1,139.753	41,771.95	(5.224)	
Yearly Summaries				1997	1998	1999	2000	2001					
				Return %	Return %	Return %	Return %	Return %					
<i>Top Eight Model Portfolio</i>				29.144	33.441	76.892	25.824	(8.468)					
Nasdaq Composite Index Fund				N/A	N/A	N/A	N/A	N/A					
Spartan 500 Index Fund - Investor Class				33.628	28.498	20.633	(9.132)	(12.054)					
Yearly Summaries				2002	2003	2004	2005	2006					
				Return %	Return %	Return %	Return %	Return %					
<i>Top Eight Model Portfolio</i>				(9.333)	35.952	10.340	31.341	10.863					
Nasdaq Composite Index Fund				N/A	N/A	8.598	1.902	10.031					
Spartan 500 Index Fund - Investor Class				(22.173)	28.487	10.733	4.858	15.712					
Yearly Summaries				2007	2008	2009	2010 YTD						
				Return %	Return %	Return %	Return %						
<i>Top Eight Model Portfolio</i>				19.463	(37.882)	22.518	(6.918)						
Nasdaq Composite Index Fund				10.497	(40.041)	44.959	(6.751)						
Spartan 500 Index Fund - Investor Class				5.426	(37.047)	26.502	(6.787)						
Lifetime Summary				1/2/97 to 6/30/10		1/2/97 to 6/30/10							
				Total Return %		Average Annual Return %							
<i>Top Eight Model Portfolio</i>				488.411		14.028							
Nasdaq Composite Index Fund				N/A		N/A							
Spartan 500 Index Fund - Investor Class				74.050		4.190							
10-Year Summary				6/30/00 to 6/30/10		6/30/00 to 6/30/10							
				Total Return %		Average Annual Return %							
<i>Top Eight Model Portfolio</i>				56.873		4.606							
Nasdaq Composite Index Fund				N/A		N/A							
Spartan 500 Index Fund - Investor Class				(15.577)		(1.679)							
5-Year Summary				6/30/05 to 6/30/10		6/30/05 to 6/30/10							
				Total Return %		Average Annual Return %							
<i>Top Eight Model Portfolio</i>				12.214		2.332							
Nasdaq Composite Index Fund				5.995		1.171							
Spartan 500 Index Fund - Investor Class				(4.262)		(0.867)							
3-Year Summary				6/29/07 to 6/30/10		6/29/07 to 6/30/10							
				Total Return %		Average Annual Return %							
<i>Top Eight Model Portfolio</i>				(23.566)		(8.569)							
Nasdaq Composite Index Fund				(17.193)		(6.095)							
Spartan 500 Index Fund - Investor Class				(26.804)		(9.879)							
1-Year Summary				6/30/09 to 6/30/10									
				Total Return %									
<i>Top Eight Model Portfolio</i>				15.036									
Nasdaq Composite Index Fund				15.791									
Spartan 500 Index Fund - Investor Class				14.245									

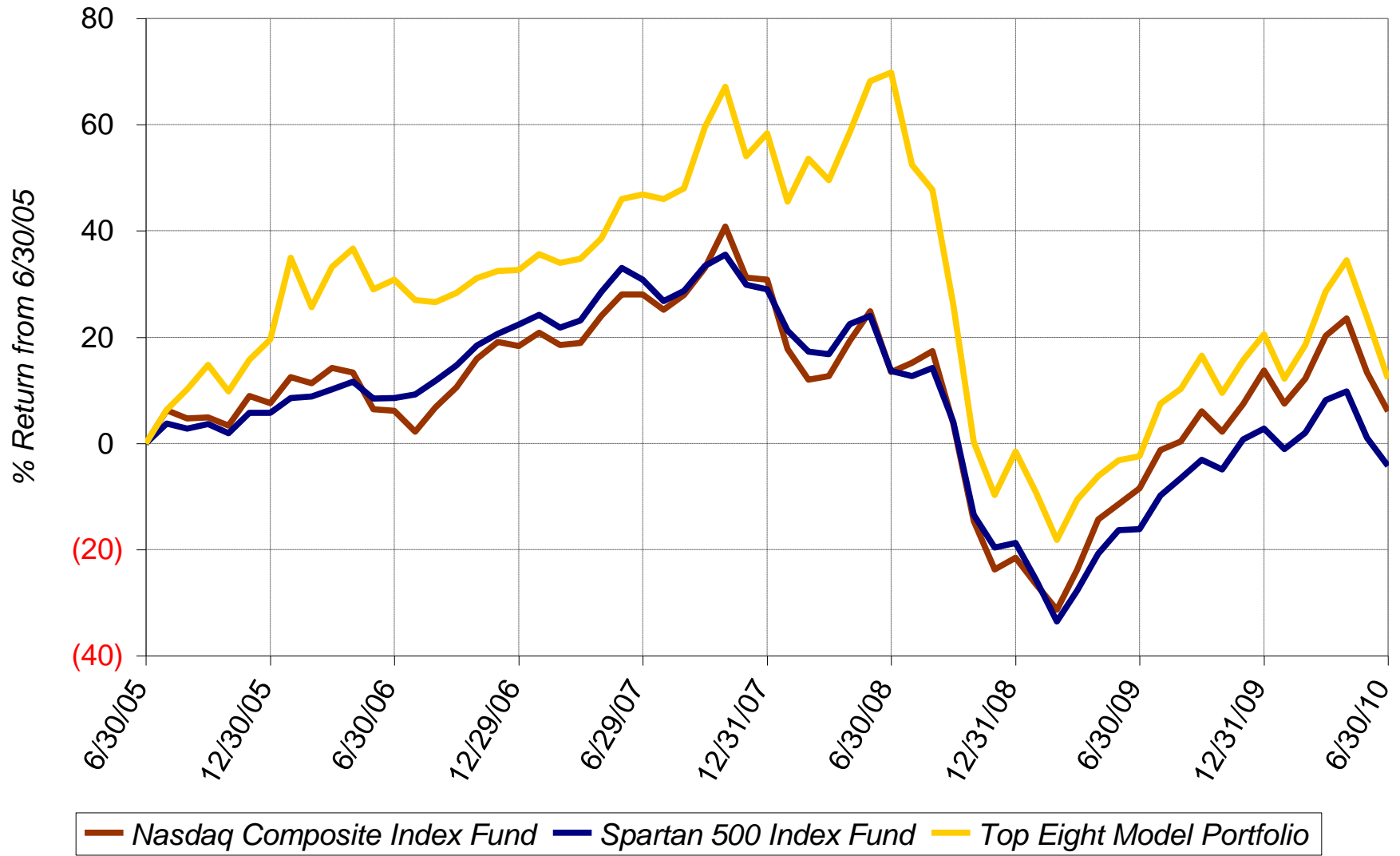
Lifetime Chart



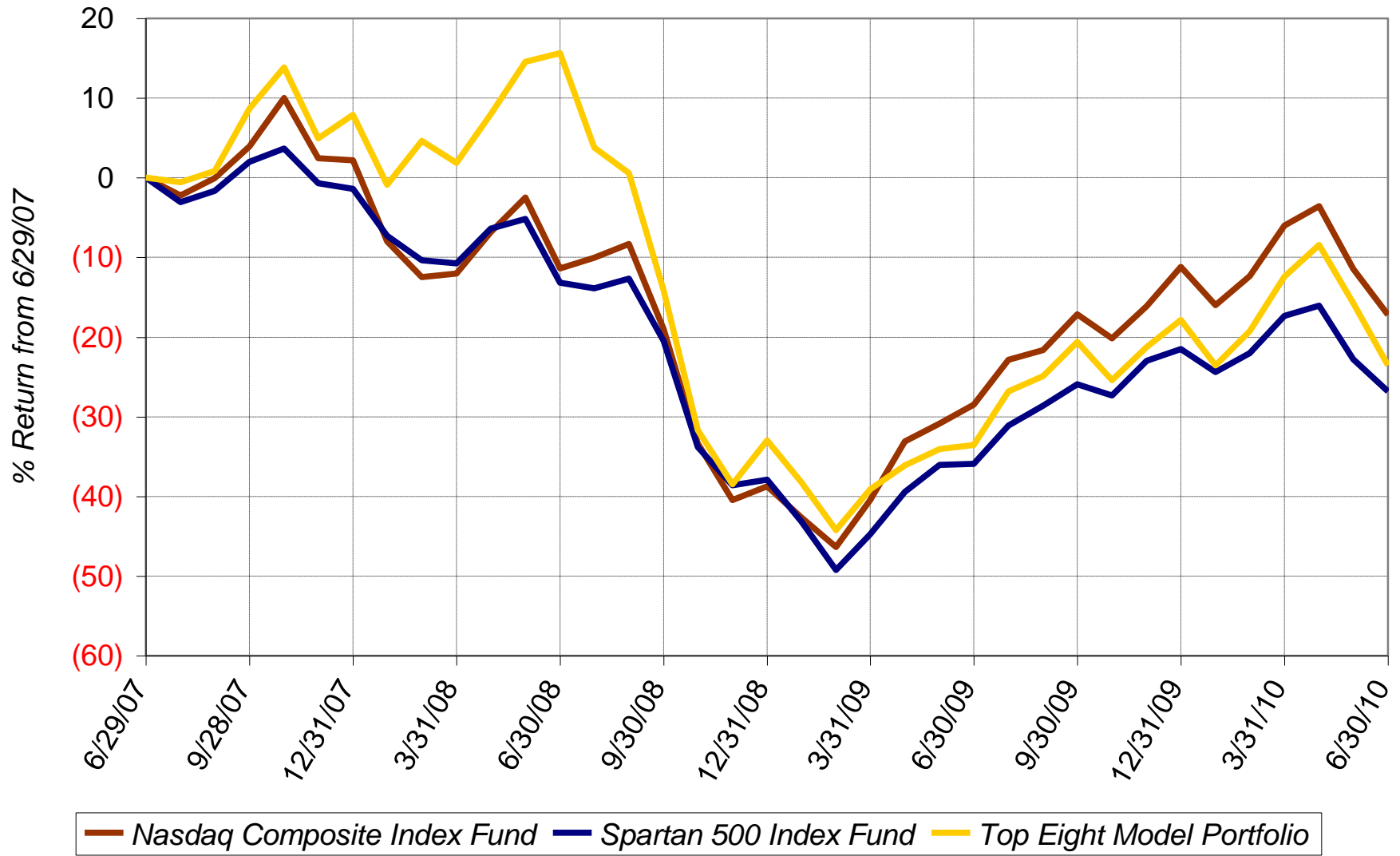
10-Year Chart



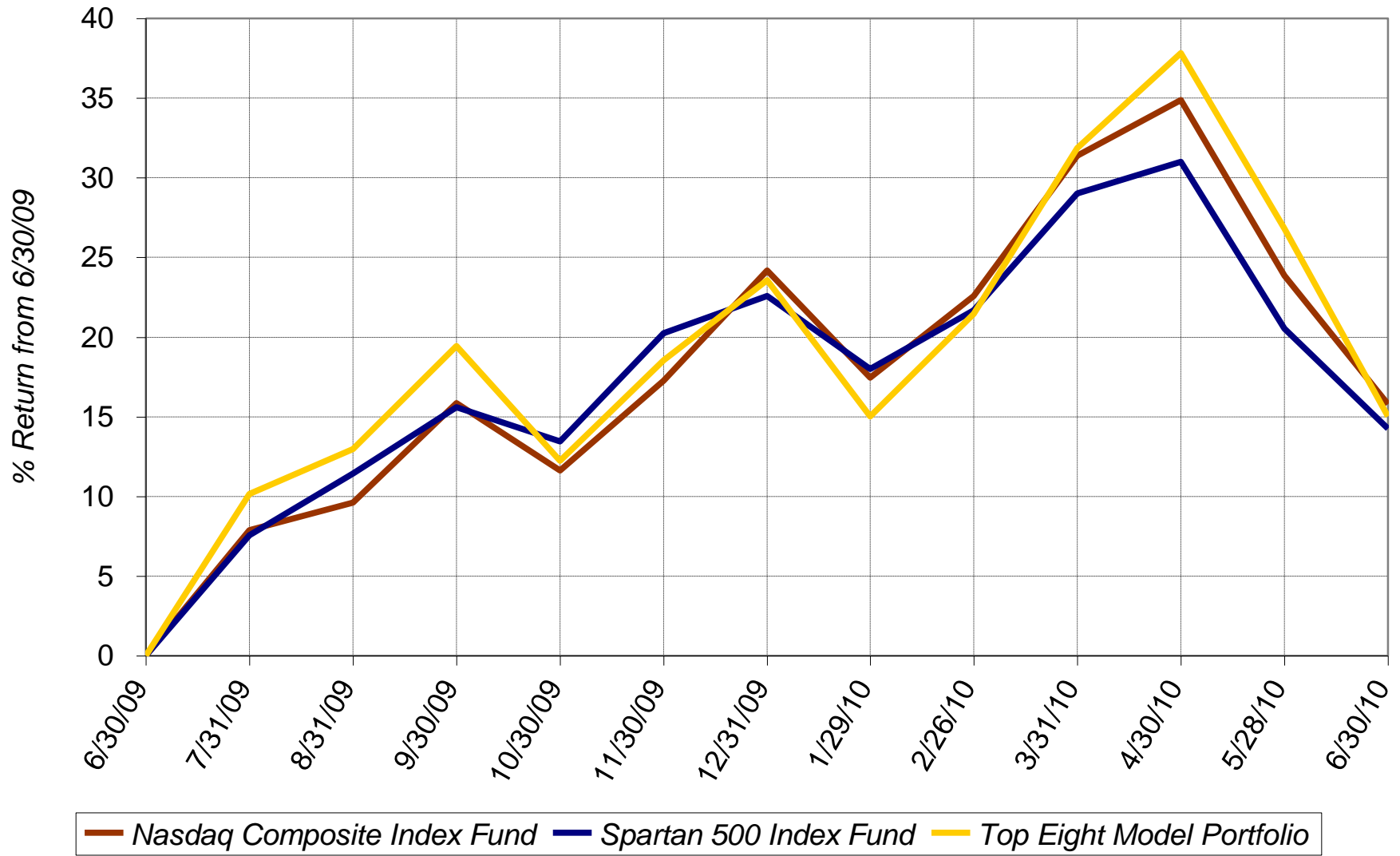
5-Year Chart



3-Year Chart



1-Year Chart



Daily Chart June 2010

